

Class Reading Progress Report

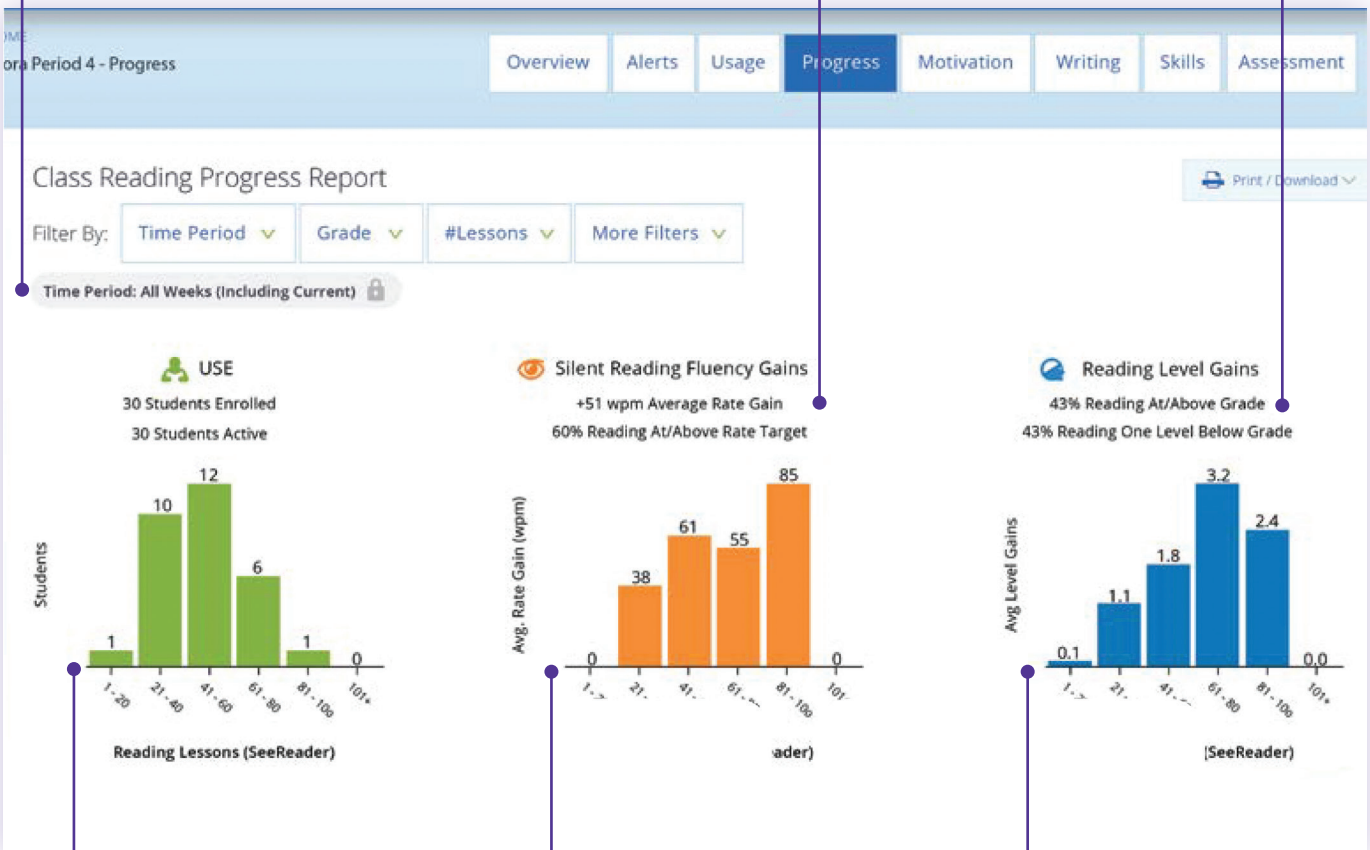
REPORT OVERVIEW

The Class Reading Progress Report provides a comprehensive picture of the efficiency/fluency gains and reading level gains students have made in the reading component.

By default, data on the report is cumulative, including the current week of instruction.

View the average words-per-minute (wpm) reading rate gain for all students, along with the percentage of students who have attained year appropriate reading rates.

View the percentage of students currently reading content at or above year level, as well as the percentage reading content just one level below.



View the number of students who have completed 1 - 20 reading lessons, etc.

View average rate gains, based on reading lessons completed. In this example, students who have completed between 61 - 80 reading lessons have made average rate gains of 55 wpm.

View average year-level gains, based on reading lessons completed. In this example, students who have completed 61 - 80 Reading lessons have made average gains of 3.2 year levels.

Class Reading Progress Report

REPORT OVERVIEW

View year level gains in reading. Decimal points represent the portion of a level completed.

View the average comprehension score for all completed reading lessons during the defined time period.



An I-Rate value is displayed in **red** if the student earned a comprehension score <80% on the most recent lesson.

In other words, the I-Rate does not represent a comprehension-based silent reading rate.

View the number of combos earned out of combos required on the current reading level. Note that support combos earned during support mode do not count toward levelling up.

A red **?** is presented if the student's independent reading rate (I-Rate) was significantly faster or significantly slower than the guided rate (G-Rate) throughout the most recent lesson. In other words, the system could not confidently report I-Rate because it was so far outside the student's target zone.

Tip: Consider checking in with the student to ensure the Guided Window is moving at a comfortable pace. If not, you can adjust the G-Rate in Settings.

Class Reading Progress Report

REPORT OVERVIEW

View the number of reading lessons completed relative to the number of reading lessons assigned.

- Each student's words-per-minute starting rate appears in the **light-orange** portion of the progress bar.
- The number within the **darker orange** or **grey** portion of the bar represents a student's current Guided Rate (G-Rate).
- Each student's year-level rate goal appears to the right of the bar.

Independent (I-Rate) is a student's words-per-minute silent reading rate when reading in the independent format, without the Guided Window scaffold.



A **dark green** colour bar means students have exceeded their goal lessons assigned.

- View the numbers in the **blue** progress bar to identify each student's starting level and current level in the Reading component.
- The left number in the **blue** progress bar indicates each student's starting level.
 - The number next to starting level represents the student's current level. Decimals represent the portion of a level completed.
 - The number outside of the blue progress bar and to the right indicates the level a student must reach to demonstrate mastery of grade-level content.